



Southern Maine Astronomers (SMA) is an all-volunteer organization dedicated to public outreach and education in astronomy. The dues that we charge our members only meet a portion of our expenses. So, we depend on charitable donations to allow us to continue to offer speaker programs, star parties, educational outreach and the loaner scope program and other programs.

SMA is incorporated as a 501 (c)(3) non-profit organization. Donations to SMA are tax-deductible. All donors are recognized in our monthly newsletter, and certain honorary naming rights may apply.

We deeply appreciate your support, and we hope to see you out under the stars!

Cash Donations

- ___\$50 Patron**
- ___\$200 Benefactor**
- ___\$500 Planetary Club**
- ___\$1000 Star Club**
- ___\$2500 Milky Way Club**
- ___\$10000 Universal Club**

Donations in all amounts are welcomed. Donations at the 'Club' level are recognized with a handsome plaque.

Equipment Donations

Donations of astronomical equipment or related items are gratefully accepted. SMA will provide a letter acknowledging your gift and your estimate of the value for tax purposes.

Description of the Equipment _____

Estimated Value _____

Star Date Donation

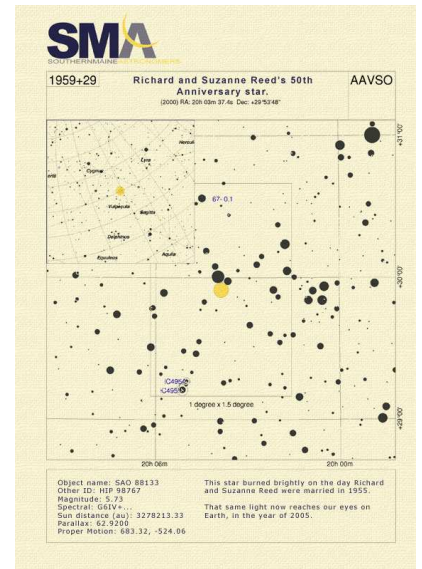
Beware of offers to 'name a star'. It is a lovely thought, but not quite what you might think. While the for-profit companies making these offers will find a star and send you a chart, the name is not recognized by the International Astronomical Union - the only body authorized to name astronomical bodies.

We think we might have a better idea.

We can't name stars either, but we can find a star whose light just now reaching us started its journey on a wedding date, birthday or some other date associated with the person(s) you wish to commemorate! For example, let's say your parents are about to celebrate their 50th wedding anniversary. We will find a star that is 50 light-years away and send you a chart.

We can also show you your star at one of our star parties, or you can arrange for a private star party. Since we are astronomers, we can also tell you the astrophysical type of your star, how old it is, what color it is and other details. We will also make a nice chart suitable for framing just like the star naming companies do.

Plus, your donation helps out a local non-profit organization.



Donation Level

\$ 50	Star Chart Suitable for framing indicating the distance to your star. If you arrange to come to one of our star parties, one of our volunteers will happily point out your star.
\$ 200	As above, but we will also take an astrophotograph of your star along with its many neighbors.
\$ 800	In addition to a photo and a chart, we will arrange with you to host a private 3 hour star party catered with light finger food and champagne. You will be able to look at your star through one of our sophisticated telescopes along with other celestial objects. Our trained volunteers will be present to act as your private guide to the sky.

Please indicate your choice:

___ \$50 Star Date star, chart suitable for framing, and viewing offer

___ \$200 Star Date star, chart, and astrophotograph.

___ \$800 Private 3 hr star party to commemorate your Star Date star.

Star Party Donation

We can arrange to put on a star party for your group. We can take up to 12 people in the group. Our private star party will include at least two trained astronomer volunteers, at least one large telescope, binoculars and a short presentation by one of the volunteers. We can also arrange to have light finger food and champagne available.

Donation Level

\$600	A private 3 hour star party for up to twelve held at one of our star party locations catered with light finger food and champagne. Depending on the season, you will be able to see planets, globular clusters, planetary nebulae, and galaxies outside our own milky way. We will also do a short visual orientation of the night sky pointing out major constellations, bright stars and planets. We will have available at least one large telescope and astronomy grade binoculars. Our trained volunteers will be present to act as your private guide to the sky.
\$ Negotiable	As above, but at your location or for larger groups.

Please indicate your choice:

___ \$600 Private 3 hr star party for twelve.

___ \$? Private star party (contact us).

Print, fill out, and mail with check to:

**SMA
P.O. Box 216
Cumberland Center, ME 04021**

Name(s for family): _____

Address: _____

City/State: _____ **Zip code:** _____

Telephone # _____

email: _____

Thank You!